

# HUMBOLDT COUNTY

SEC. 17 T.36N. R.44E.

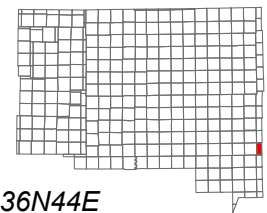
NOTE: This plat is for assessment purposes only and does not represent a survey of the lands on this plat.



Map Prepared by:  
HUMBOLDT COUNTY ASSESSOR'S OFFICE  
WINNEMUCCA, NEVADA 89445

7-66

1"=600'  
M.D.B. & M.

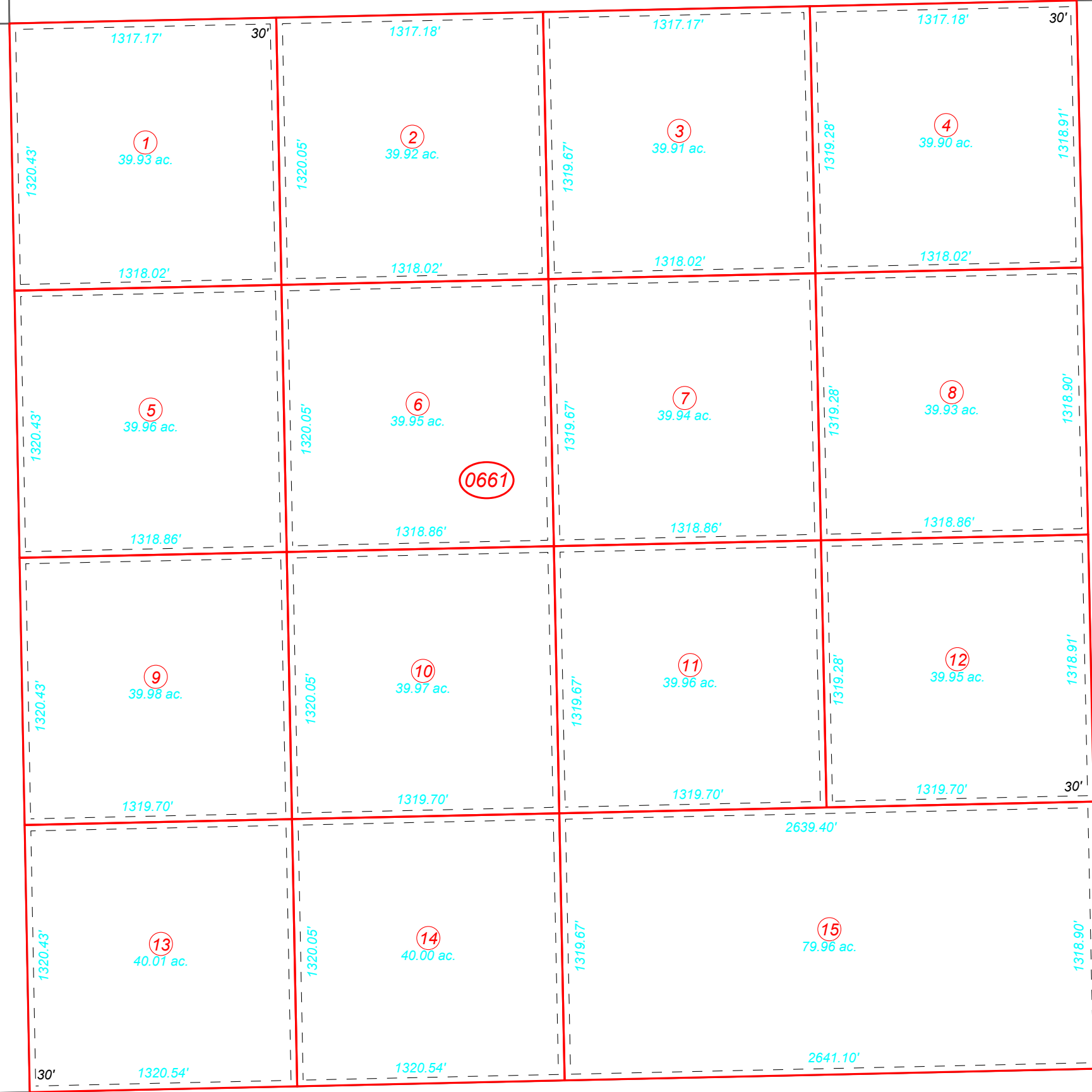


06	05	04	03	02	01
07	08	09	10	11	12
18	17	16	15	14	13
19	20	21	22	23	24
30	29	28	27	26	25
31	32	33	34	35	36



36N44E

ELEVENMILE WELL RD  
31  
Page 3



0661

31  
Page 1