

HUMBOLDT COUNTY

PT. N1/2 SEC. 21 T.37N. R.38E.

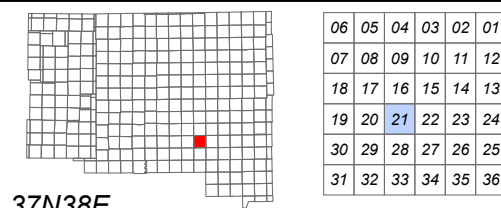
NOTE: This plat is for assessment purposes only and does not represent a survey of the lands on this plat.



Map Prepared by:
HUMBOLDT COUNTY ASSESSOR'S OFFICE
WINNEMUCCA, NEVADA 89445

6-51

1"=300'
M.D.B. & M.



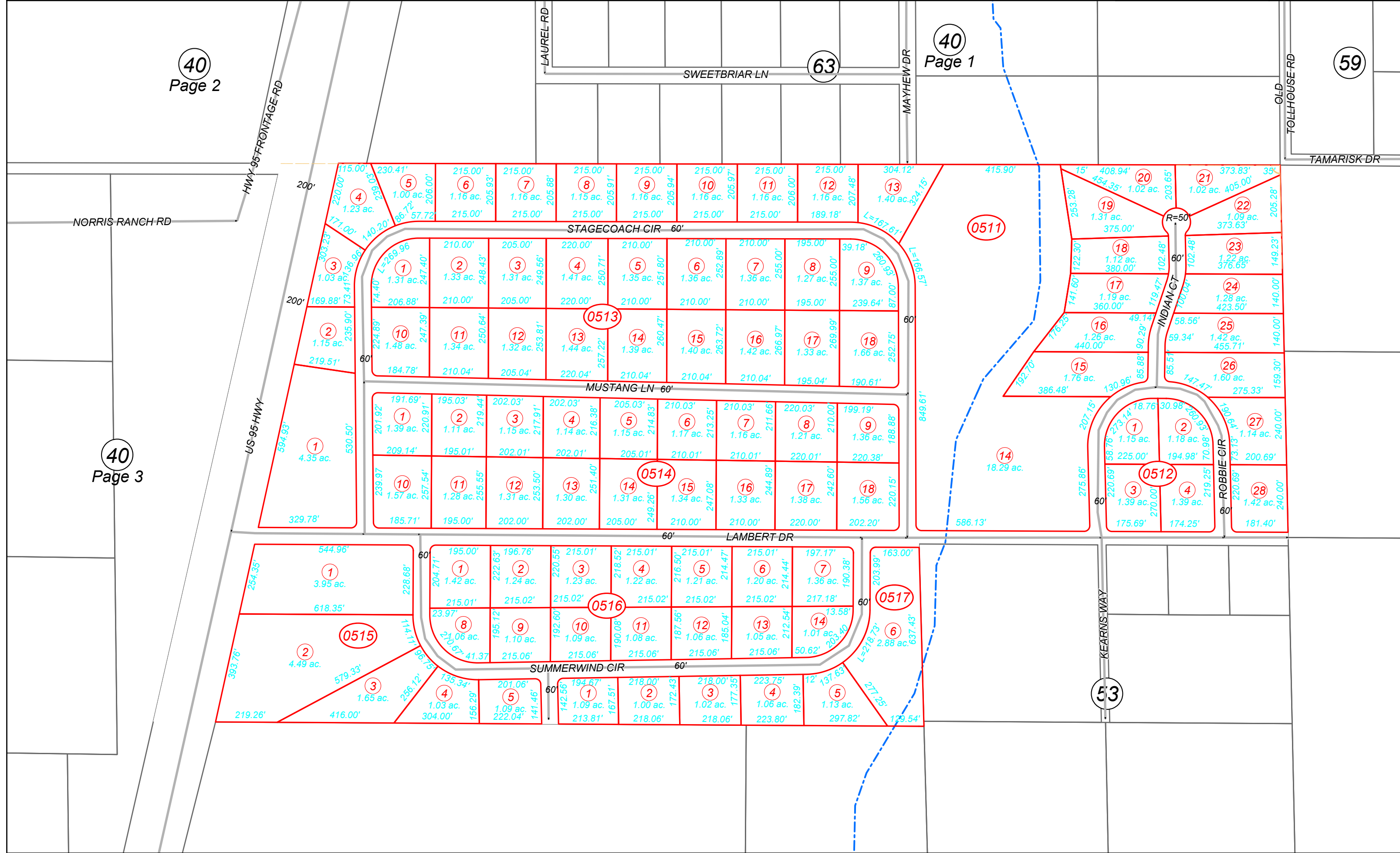
37N38E



40
Page 2

40
Page 1

59



40
Page 3

53