

HUMBOLDT COUNTY

T.38N. R.37E.

NOTE: This plat is for assessment purposes only and does not represent a survey of the lands on this plat.



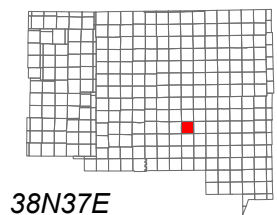
Map Prepared by:
HUMBOLDT COUNTY ASSESSOR'S OFFICE
WINNEMUCCA, NEVADA 89445

6-31

Page 1 of 2

1"=4,000'

M.D.B. & M.



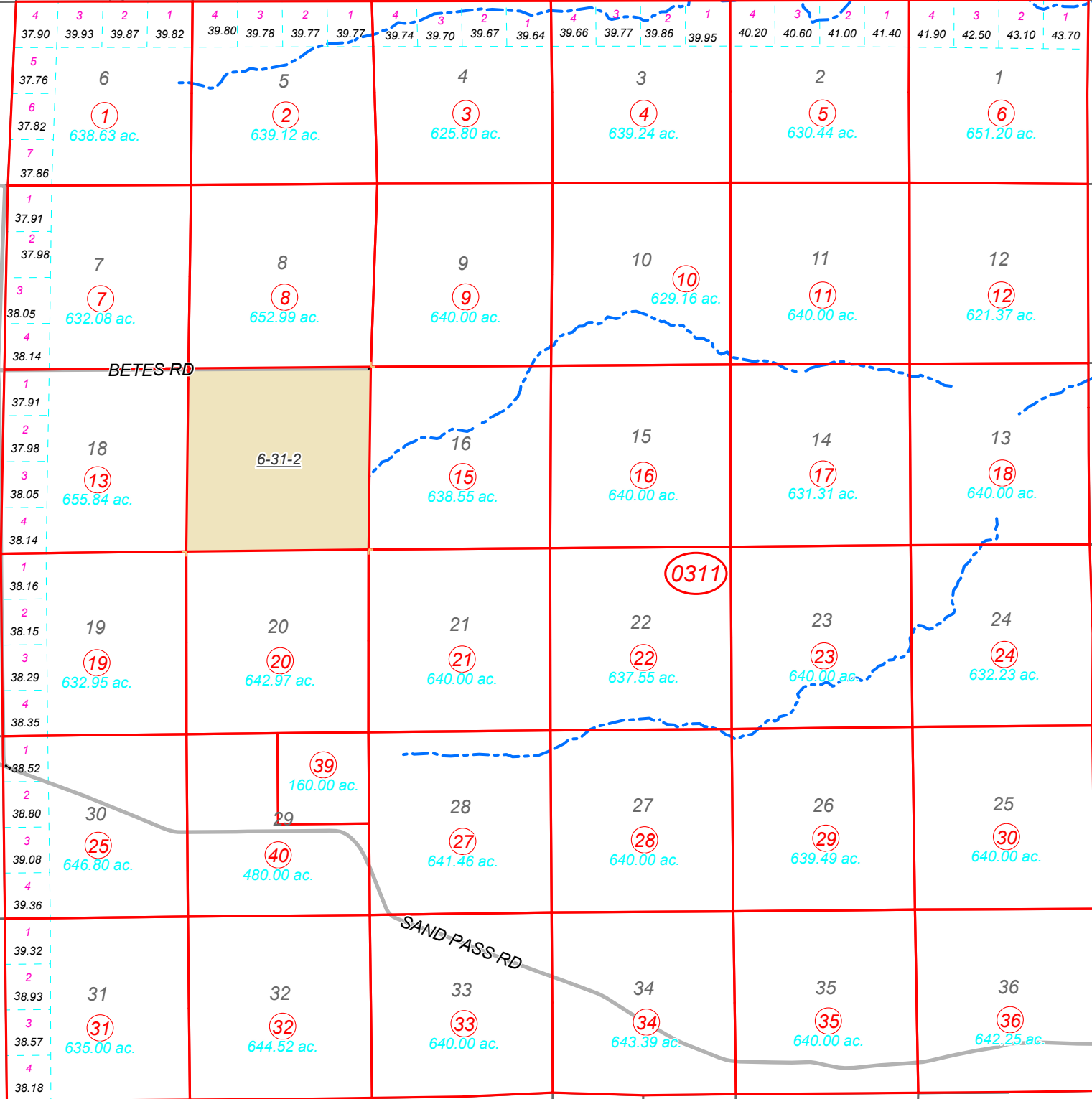
06	05	04	03	02	01
07	08	09	10	11	12
18	17	16	15	14	13
19	20	21	22	23	24
30	29	28	27	26	25
31	32	33	34	35	36



38N37E

7

8
Page 1



Bk.05

SILVER STATE DRAW RD

BETES RD

SAND PASS RD

US 95 HWY

32
Page 1

39

44

40
Page 1