

HUMBOLDT COUNTY

T.35N. R.32 1/2E.

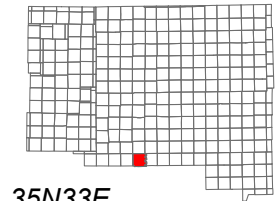
NOTE: This plat is for assessment purposes only and does not represent a survey of the lands on this plat.



Map Prepared by:
HUMBOLDT COUNTY ASSESSOR'S OFFICE
WINNEMUCCA, NEVADA 89445

5-65

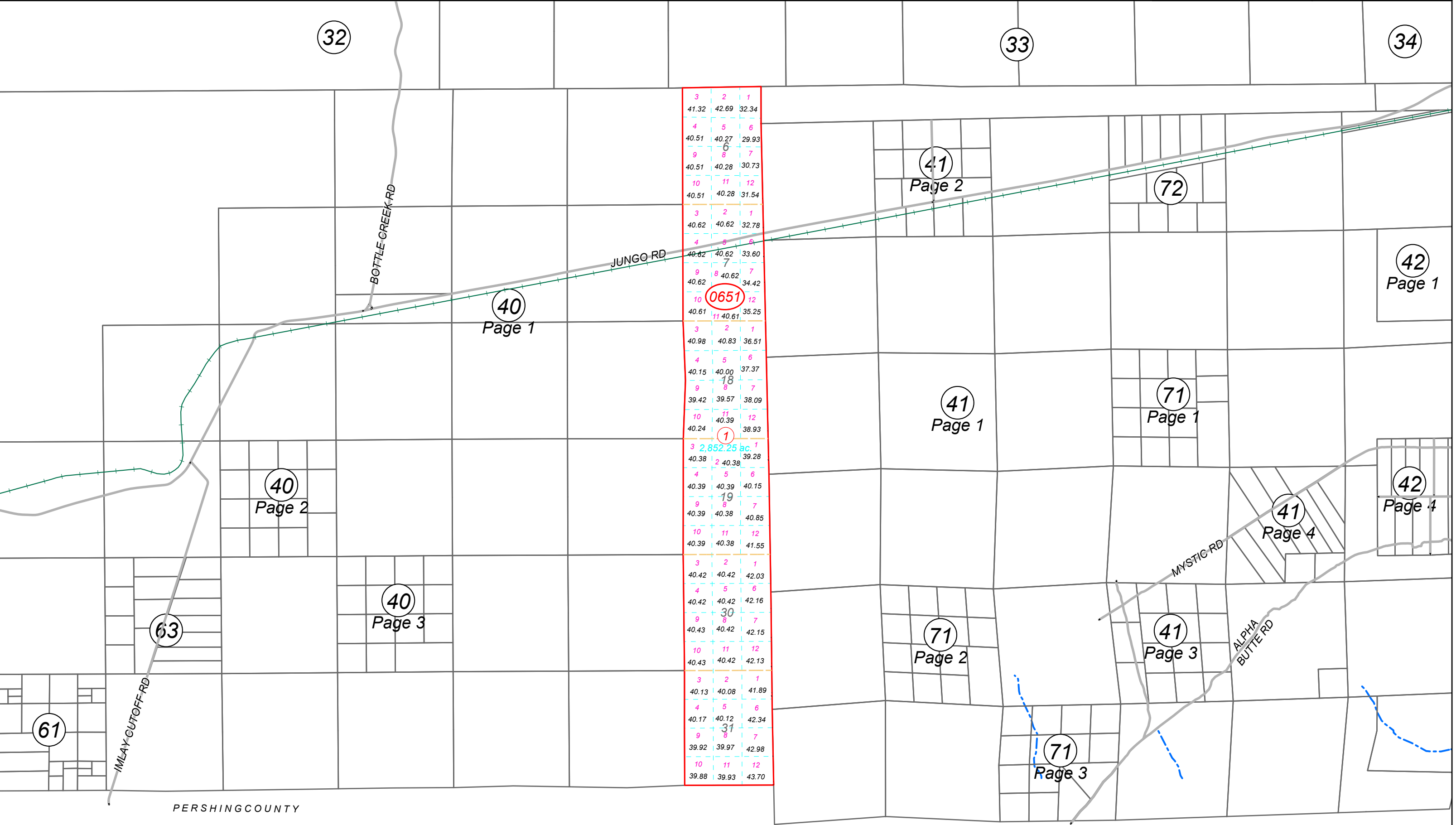
1"=4,000'
M.D.B. & M.



06	05	04	03	02	01
07	08	09	10	11	12
18	17	16	15	14	13
19	20	21	22	23	24
30	29	28	27	26	25
31	32	33	34	35	36



35N33E



3	2	1	
41.32	42.69	32.34	
4	5	6	
40.51	40.27	29.93	
9	8	7	
40.51	40.28	30.73	
10	11	12	
40.51	40.28	31.54	
3	2	1	
40.62	40.62	32.78	
4	5	6	
40.62	40.62	33.60	
9	8	7	
40.62	40.62	34.42	
10	0651	12	
40.61	11	40.61	35.25
3	2	1	
40.98	40.83	36.51	
4	5	6	
40.15	40.00	37.37	
9	8	7	
39.42	39.57	38.09	
10	11	12	
40.24	40.39	38.93	
1			
3	2,852.25 ac.	1	
40.38	2	40.38	39.28
4	5	6	
40.39	40.39	40.15	
9	8	7	
40.39	40.38	40.85	
10	11	12	
40.39	40.38	41.55	
3	2	1	
40.42	40.42	42.03	
4	5	6	
40.42	40.42	42.16	
9	8	7	
40.43	40.42	42.15	
10	11	12	
40.43	40.42	42.13	
3	2	1	
40.13	40.08	41.89	
4	5	6	
40.17	40.12	42.34	
9	8	7	
39.92	39.97	42.98	
10	11	12	
39.88	39.93	43.70	

PERSHING COUNTY

PERSHING COUNTY