

06	05	04	03	02	01
07	08	09	10	11	12
18	17	16	15	14	13
19	20	21	22	23	24
30	29	28	27	26	25
31	32	33	34	35	36



# HUMBOLDT COUNTY

SEC. 31 T.35N. R.35E.

NOTE: This plat is for assessment purposes only and does not represent a survey of the lands on this plat.



Map Prepared by:  
HUMBOLDT COUNTY ASSESSOR'S OFFICE  
WINNEMUCCA, NEVADA 89445

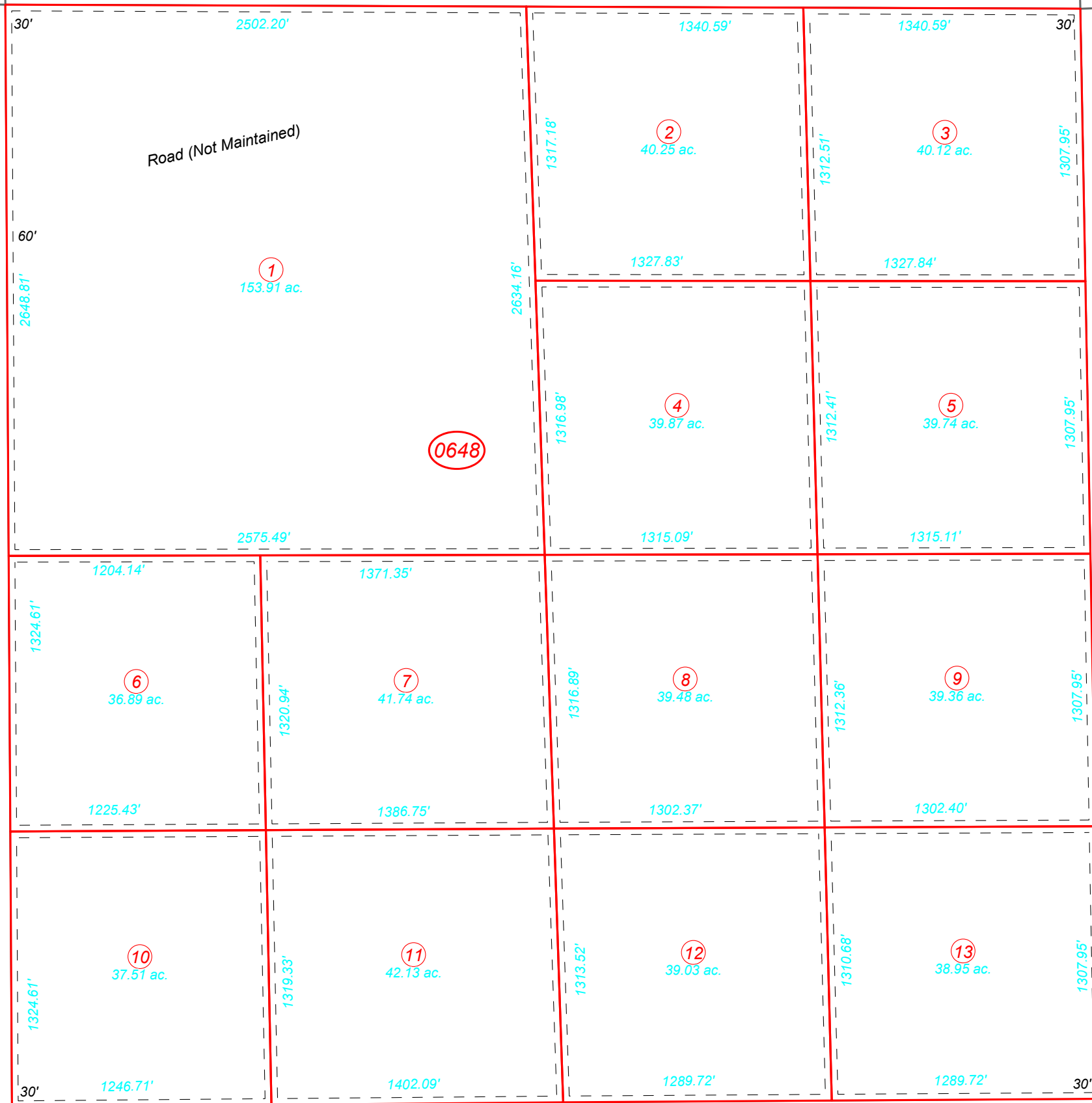
5-64  
Page 3 of 3

1"=600'  
M.D.B. & M.

35N35E

42  
Page 1

44  
Page 1



PERSHING COUNTY