

06	05	04	03	02	01
07	08	09	10	11	12
18	17	16	15	14	13
19	20	21	22	23	24
30	29	28	27	26	25
31	32	33	34	35	36



**HUMBOLDT COUNTY**  
E1/2 NW1/4 SEC. 17 T.43N. R.28E.

NOTE: This plat is for assessment purposes only  
and does not represent a survey of the lands on this plat.

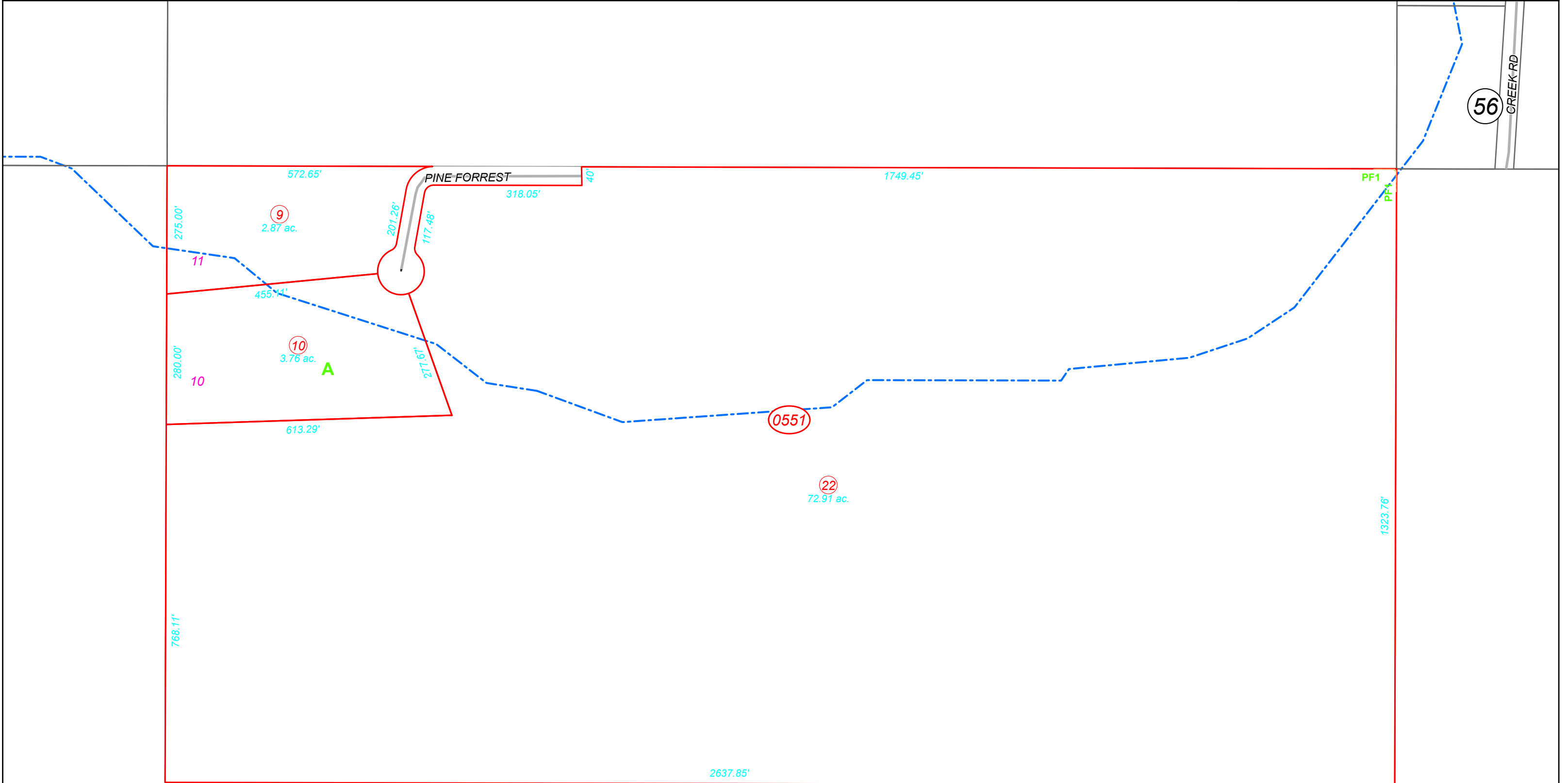


Map Prepared by:  
HUMBOLDT COUNTY ASSESSOR'S OFFICE  
WINNEMUCCA, NEVADA 89445

2-55

1"=200'  
M.D.B. & M.

43N28E



35