

06	05	04	03	02	01
07	08	09	10	11	12
18	17	16	15	14	13
19	20	21	22	23	24
30	29	28	27	26	25
31	32	33	34	35	36



HUMBOLDT COUNTY

T.38N. R.23 1/2E.

NOTE: This plat is for assessment purposes only and does not represent a survey of the lands on this plat.



Map Prepared by:
HUMBOLDT COUNTY ASSESSOR'S OFFICE
WINNEMUCCA, NEVADA 89445

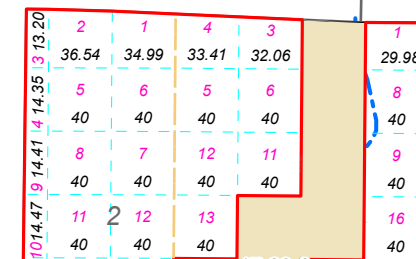
17-39
Page 1 of 3

1"=4,000'
M.D.B. & M.

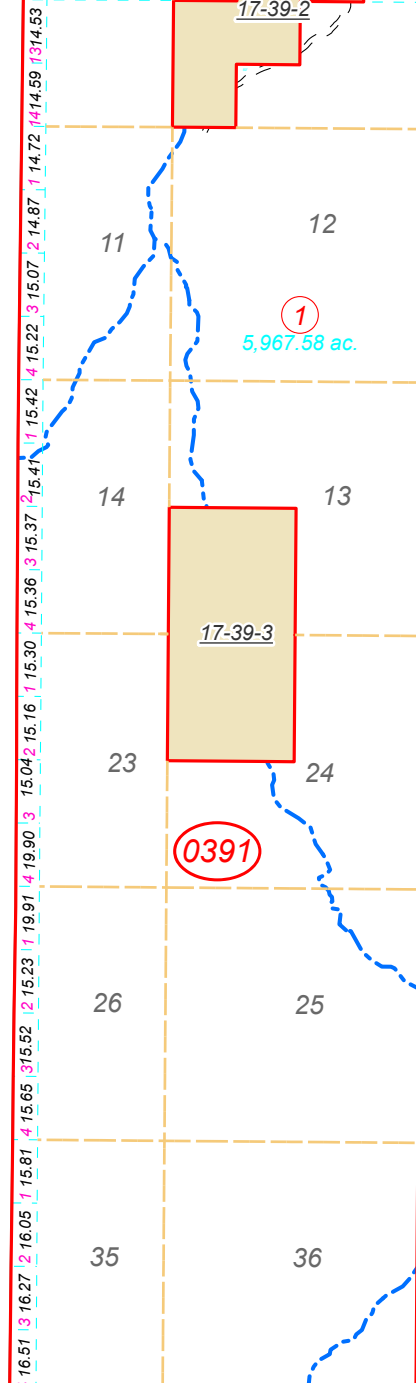
38N23.5E

WASHOE COUNTY

34



WASHOE COUNTY



40

44

45