

06	05	04	03	02	01
07	08	09	10	11	12
18	17	16	15	14	13
19	20	21	22	23	24
30	29	28	27	26	25
31	32	33	34	35	36



# HUMBOLDT COUNTY

T.44N. R.24 1/2E.

NOTE: This plat is for assessment purposes only and does not represent a survey of the lands on this plat.

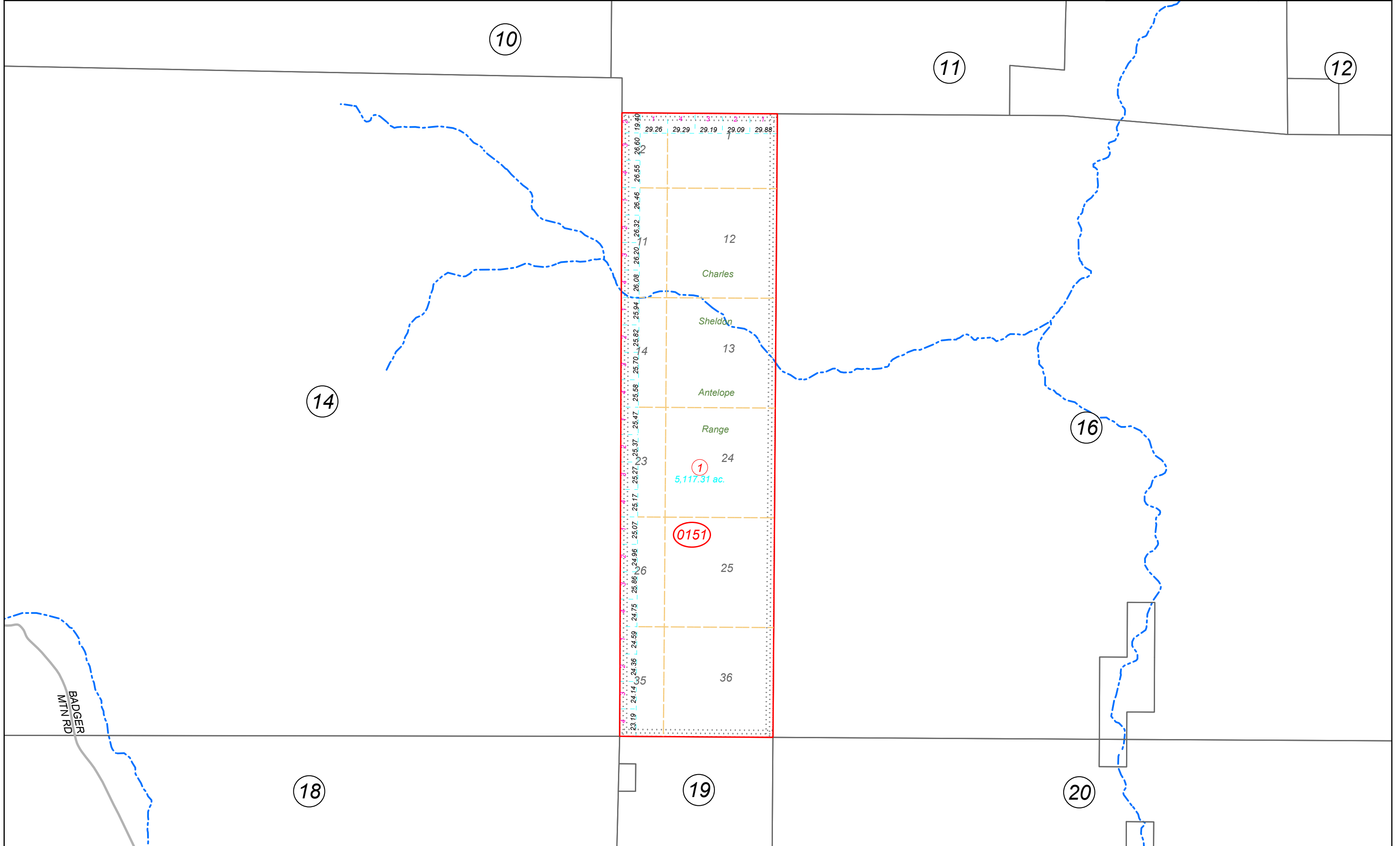


Map Prepared by:  
HUMBOLDT COUNTY ASSESSOR'S OFFICE  
WINNEMUCCA, NEVADA 89445

## 17-15

1"=4,000'  
M.D.B. & M.

44N24.5E



29.26	29.29	29.19	29.09	29.88
26.60	26.60	26.55	26.46	26.32
26.20	26.08	25.94	25.82	25.70
25.58	25.47	25.37	25.27	25.17
25.07	24.96	24.86	24.75	24.59
24.36	24.14	23.19		