

HUMBOLDT COUNTY

PT. SE1/4 NW1/4 SEC. 28 T.36N. R.38E.

Highland Park Sub. 1 - Winnemucca

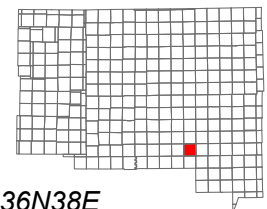
NOTE: This plat is for assessment purposes only and does not represent a survey of the lands on this plat.



Map Prepared by:
HUMBOLDT COUNTY ASSESSOR'S OFFICE
WINNEMUCCA, NEVADA 89445

16-60

1"=200'
M.D.B. & M.



06	05	04	03	02	01
07	08	09	10	11	12
18	17	16	15	14	13
19	20	21	22	23	24
30	29	28	27	26	25
31	32	33	34	35	36



36N38E

33
Page 1

34

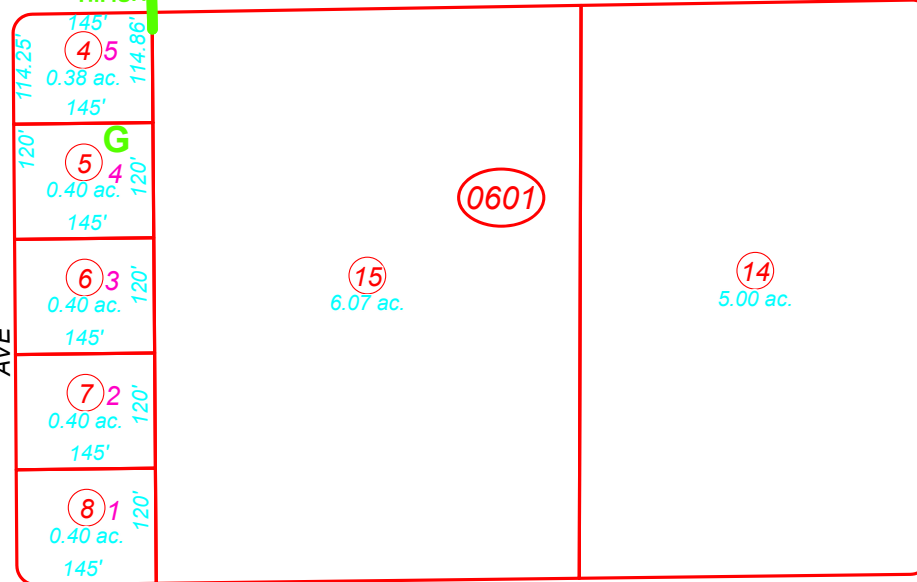
GREAT BASIN AVE

TWO ANGEL DR

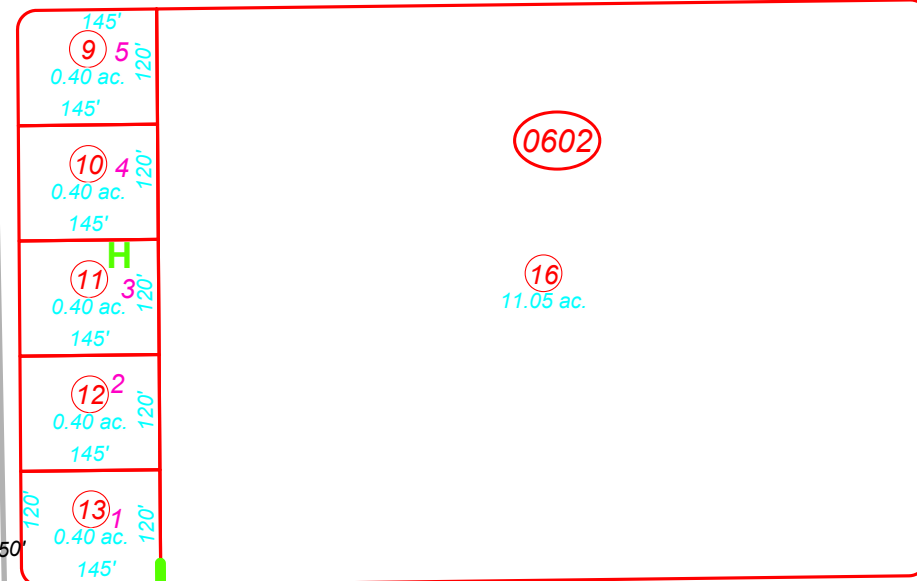
PAIUTE ST

KLUNCY CANYON RD

H.P.S.



KIRKWAY DR



H.P.S.

60

PALISADE DR

FRONTIER ST

PAIUTE ST

PARK MANOR

KENSINGTON DR

SHERWOOD AVE

39

44

40

43