

HUMBOLDT COUNTY

PT. S1/2 S1/2 SE1/4 SEC. 11 T.35N. R.37E.

Thomas Canyon Acres Unit 2

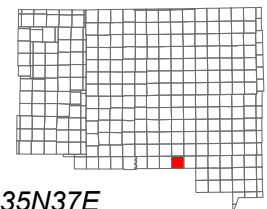
NOTE: This plat is for assessment purposes only and does not represent a survey of the lands on this plat.



Map Prepared by:
HUMBOLDT COUNTY ASSESSOR'S OFFICE
WINNEMUCCA, NEVADA 89445

13-38

1"=200'
M.D.B. & M.



06	05	04	03	02	01
07	08	09	10	11	12
18	17	16	15	14	13
19	20	21	22	23	24
30	29	28	27	26	25
31	32	33	34	35	36

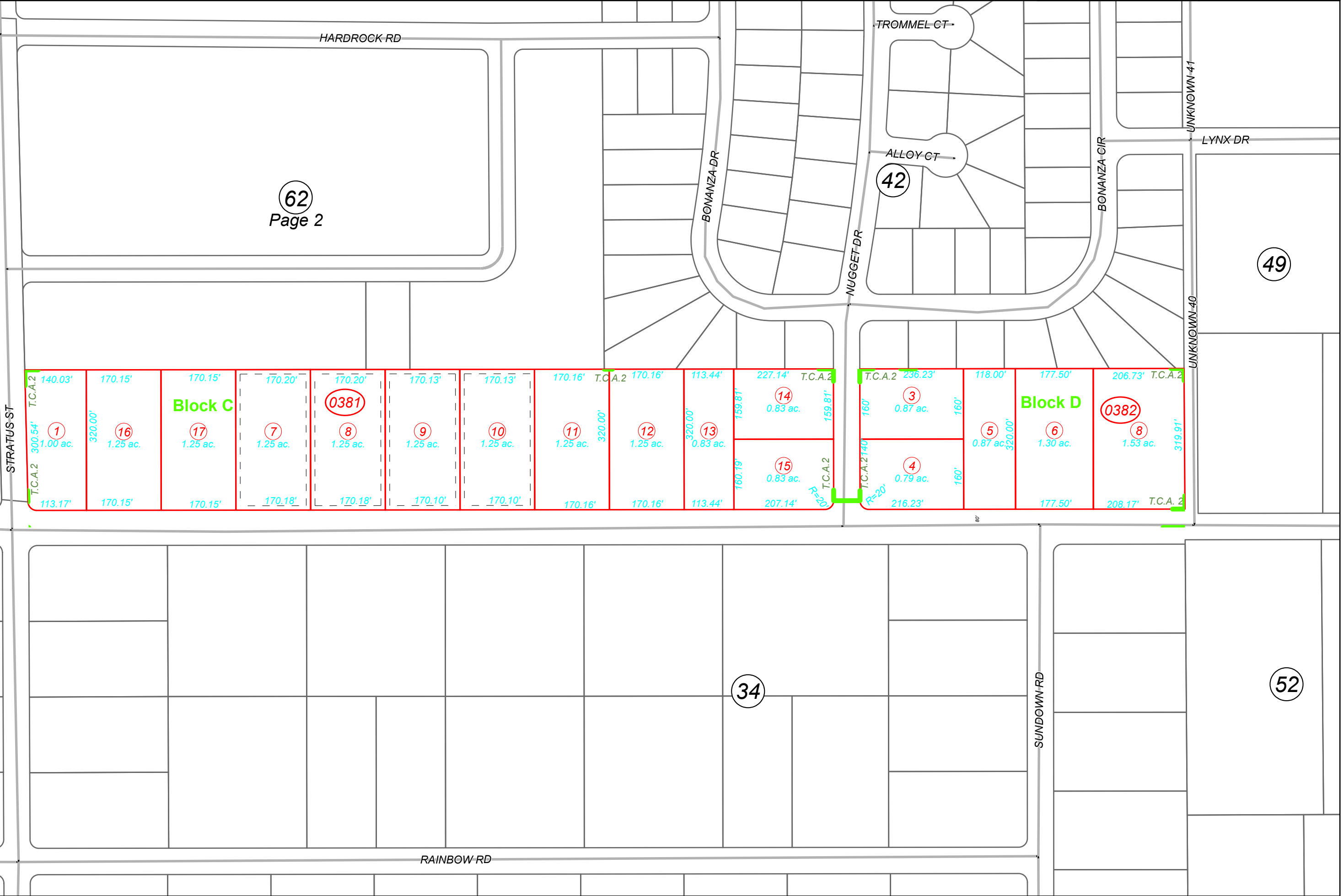


35N37E

62
Page 2

37

49



THOMAS CANYON RD

33

34

52

RAINBOW RD

SUNDOWN RD