

HUMBOLDT COUNTY

E1/2 SE1/4 SEC. 33 T.36N. R.38E.

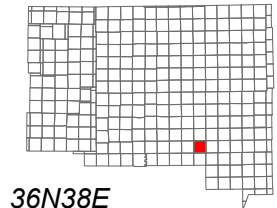
NOTE: This plat is for assessment purposes only and does not represent a survey of the lands on this plat.



Map Prepared by:  
HUMBOLDT COUNTY ASSESSOR'S OFFICE  
WINNEMUCCA, NEVADA 89445

10-68

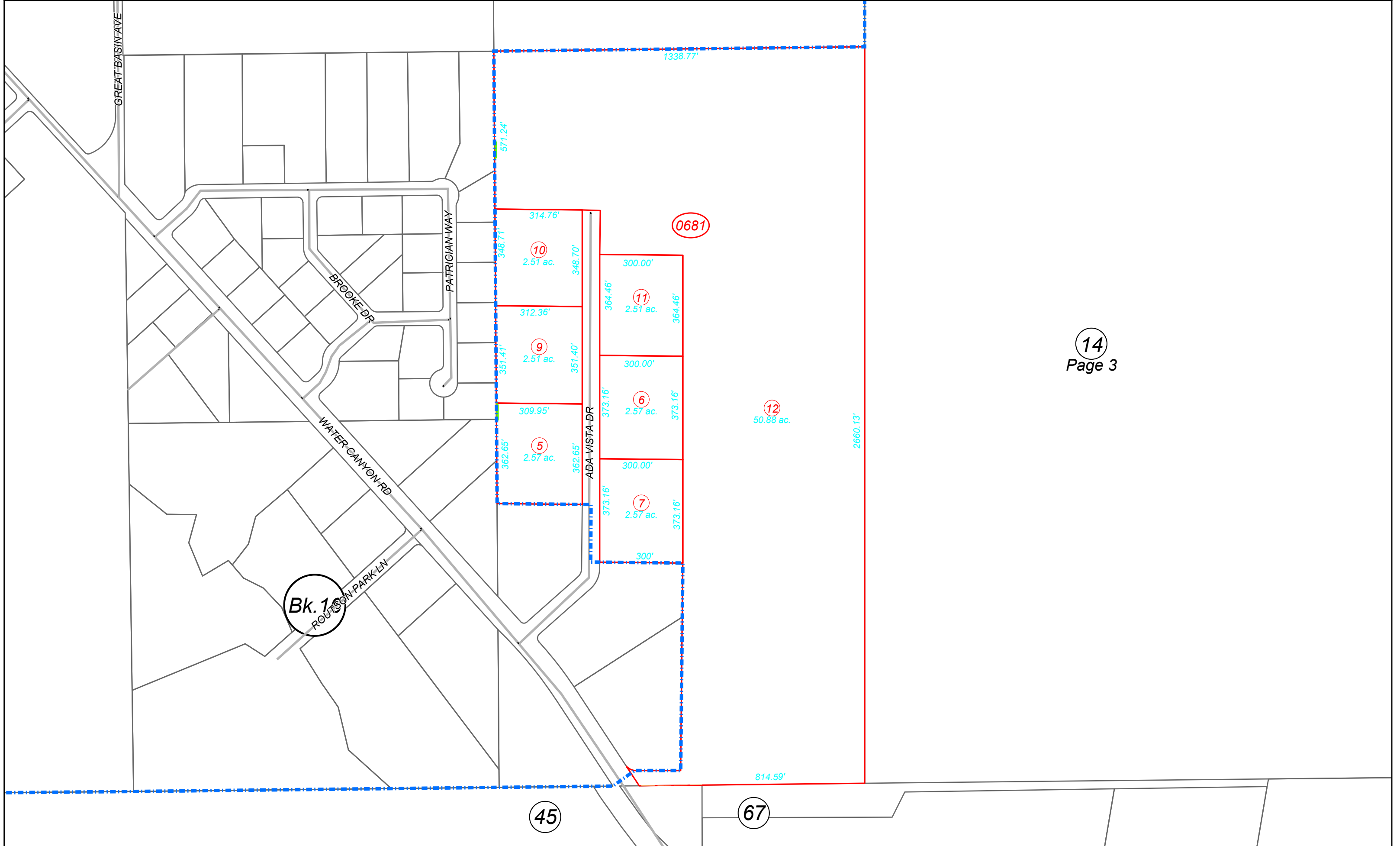
1"=300'  
M.D.B. & M.



06	05	04	03	02	01
07	08	09	10	11	12
18	17	16	15	14	13
19	20	21	22	23	24
30	29	28	27	26	25
31	32	33	34	35	36



36N38E



14  
Page 3

45

67

Bk. 16  
ROUND PARK LN