

HUMBOLDT COUNTY

N1/2 NW1/4 SEC. 18 T.35N. R.38E.

NOTE: This plat is for assessment purposes only and does not represent a survey of the lands on this plat.



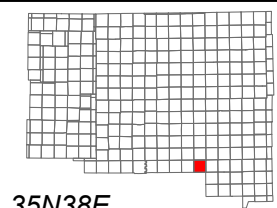
Map Prepared by:
HUMBOLDT COUNTY ASSESSOR'S OFFICE
WINNEMUCCA, NEVADA 89445

10-61

1"=200'
M.D.B. & M.

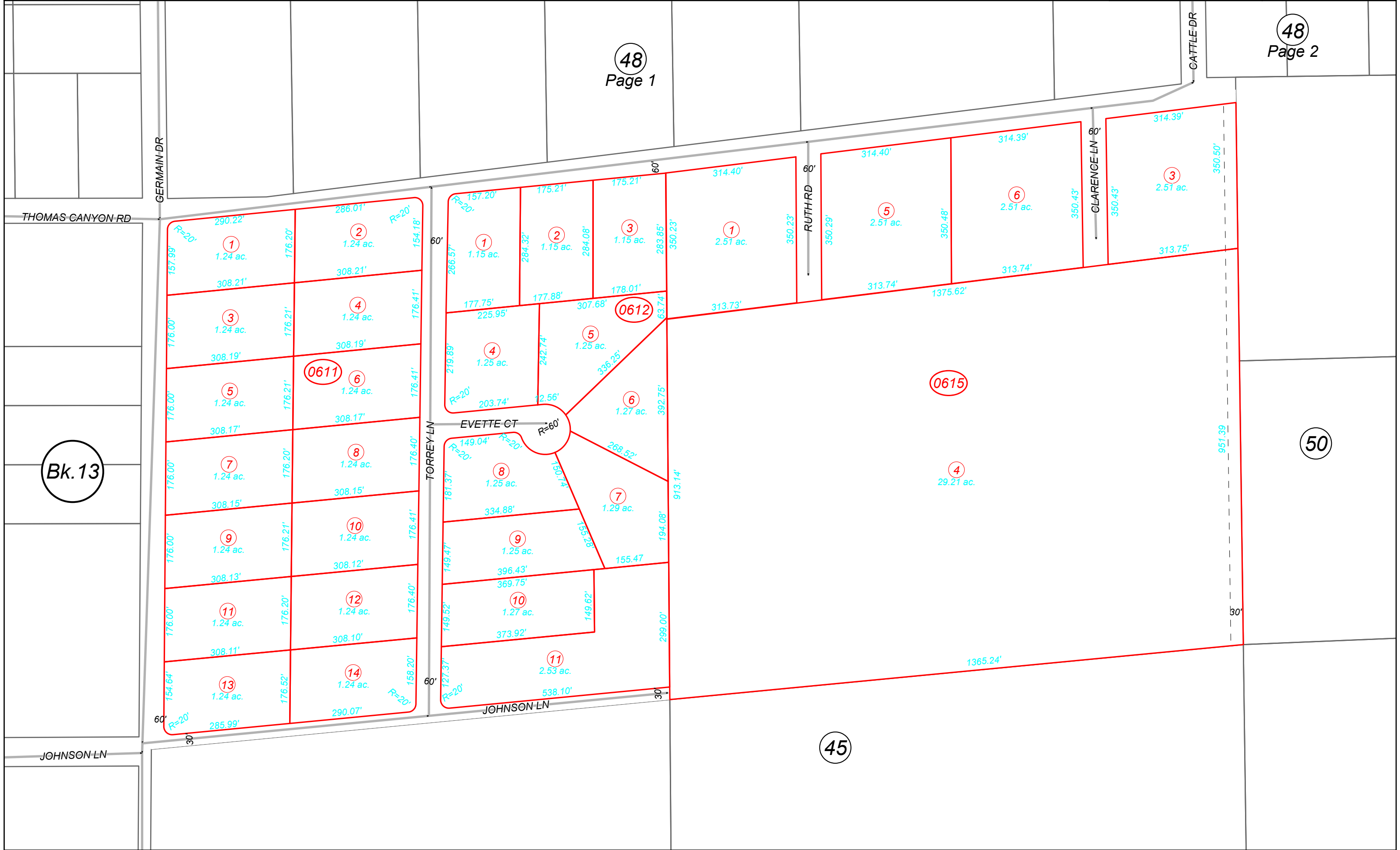
48
Page 1

48
Page 2



06	05	04	03	02	01
07	08	09	10	11	12
18	17	16	15	14	13
19	20	21	22	23	24
30	29	28	27	26	25
31	32	33	34	35	36

35N38E



Bk. 13

50

45