

# HUMBOLDT COUNTY

NW1/4 T.36N. R.38E.

NOTE: This plat is for assessment purposes only and does not represent a survey of the lands on this plat.



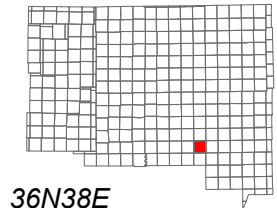
Map Prepared by:  
HUMBOLDT COUNTY ASSESSOR'S OFFICE  
WINNEMUCCA, NEVADA 89445

10-14

Page 1 of 3

1"=1,800'

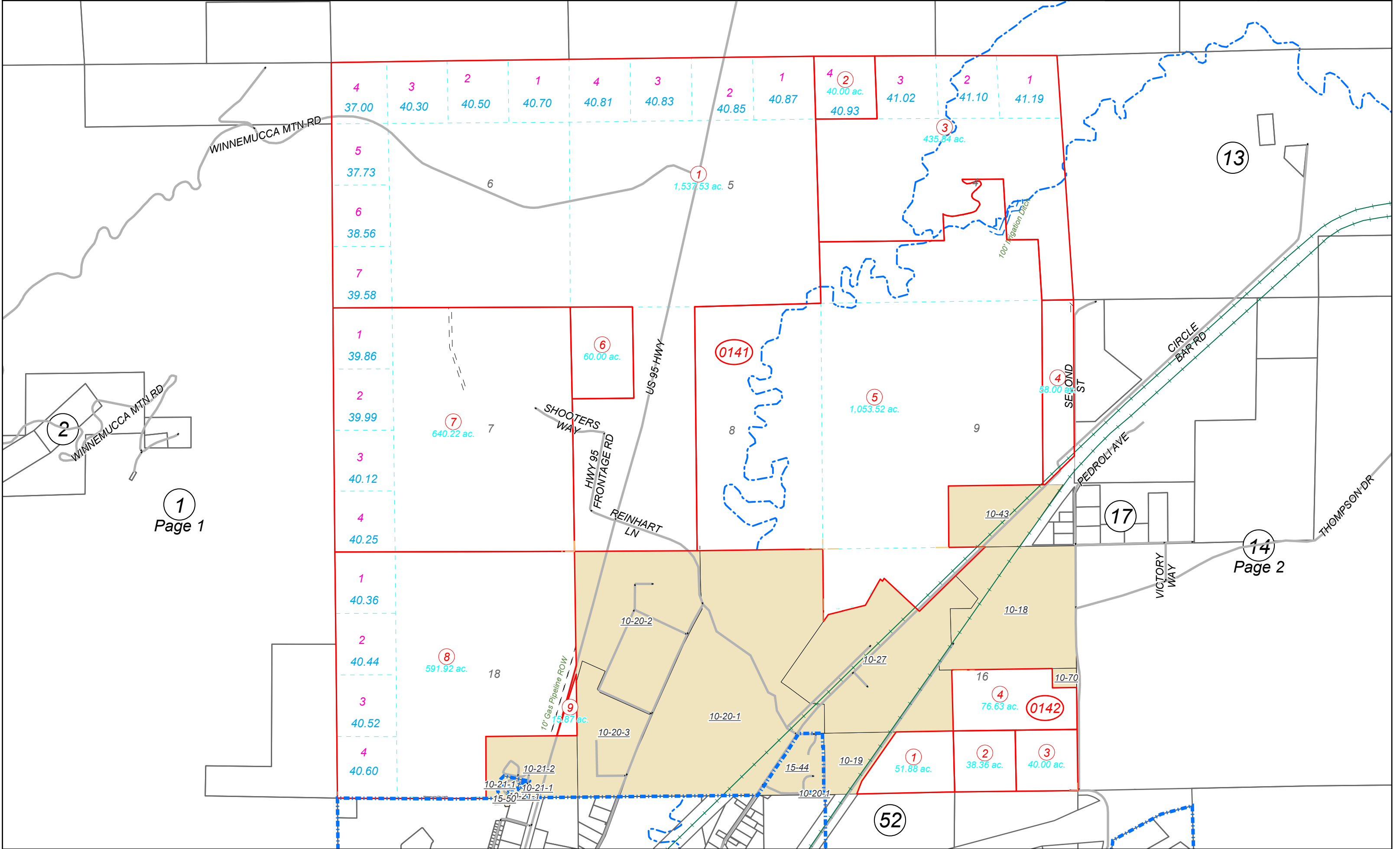
M.D.B. & M.



06	05	04	03	02	01
07	08	09	10	11	12
18	17	16	15	14	13
19	20	21	22	23	24
30	29	28	27	26	25
31	32	33	34	35	36



36N38E



1  
Page 1

14  
Page 2

52