

HUMBOLDT COUNTY
PT. NE1/4 SEC. 21 T.36N. R.38E.

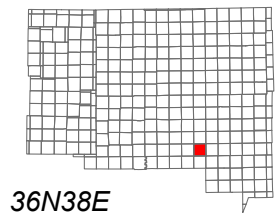
NOTE: This plat is for assessment purposes only
and does not represent a survey of the lands on this plat.



Map Prepared by:
HUMBOLDT COUNTY ASSESSOR'S OFFICE
WINNEMUCCA, NEVADA 89445

10-12

1"=300'
M.D.B. & M.



06	05	04	03	02	01
07	08	09	10	11	12
18	17	16	15	14	13
19	20	21	22	23	24
30	29	28	27	26	25
31	32	33	34	35	36



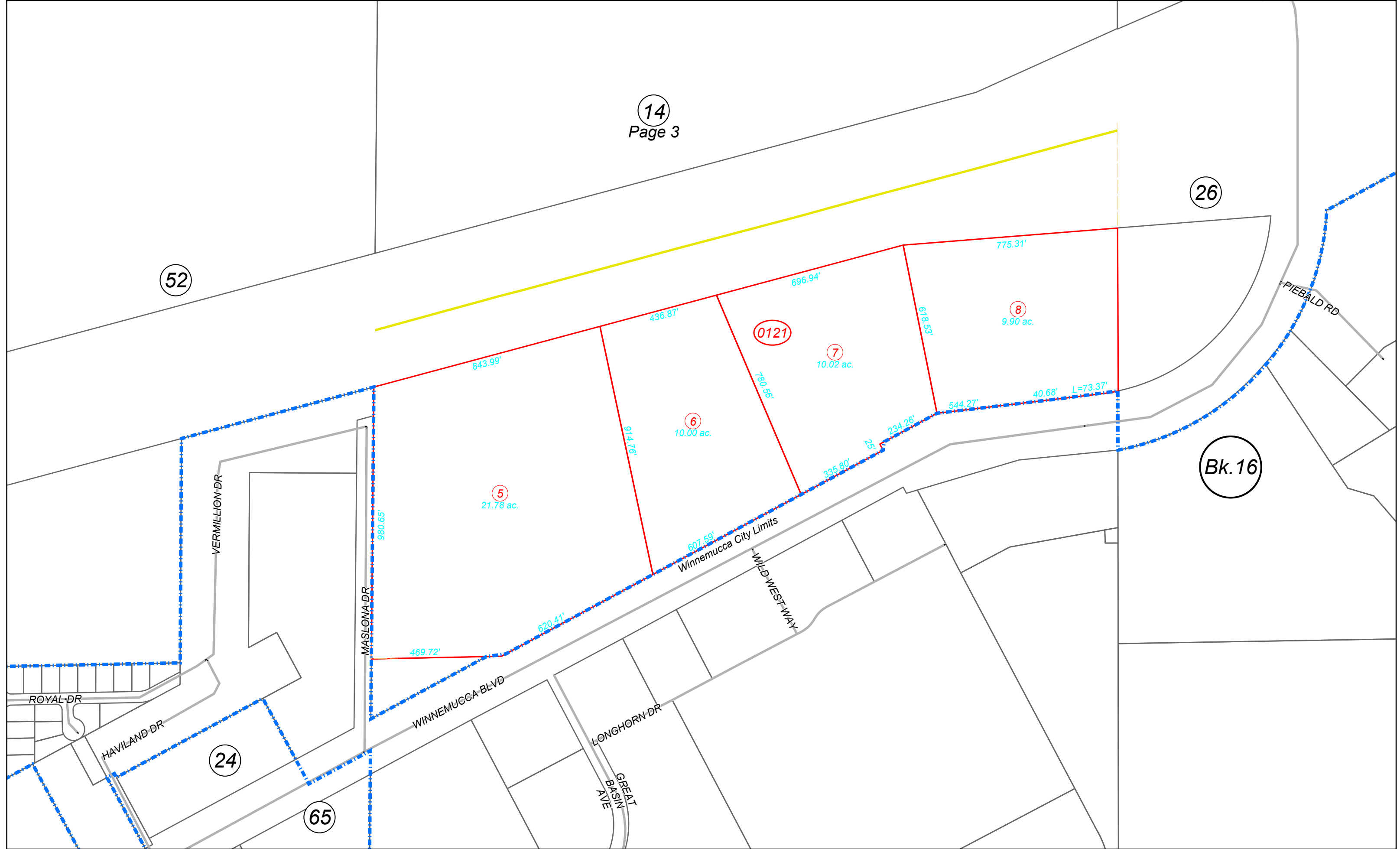
36N38E

14
Page 3

26

52

Bk.16



VERMILLION DR

MASLONA DR

ROYAL DR

HAVILAND DR

WINNEMUCCA BLVD

LONGHORN DR

WILD WEST WAY

PIEBALD RD

24

65

5
21.78 ac.

6
10.00 ac.

7
10.02 ac.

8
9.90 ac.

0121

Winnemucca City Limits

469.72'

620.41'

607.59'

335.80'

234.26'

544.27'

40.68'

L=73.37'

436.87'

696.94'

618.53'

775.31'

Bk.16